

**28 St John's Square
Clerkenwell EC1**

KLACCO HOUSE

Newly refurbished fully fitted and
CAT A office floors available
for rent in the heart of Clerkenwell

A NEW PERSPECTIVE

This former Victorian warehouse has been comprehensively refurbished in London's creative and technology hub.

The building provides 4,361 sq ft of sleek and modern office space, designed to the highest specification expected by occupiers in Clerkenwell and Farringdon.



01. First Floor
02. Staircase
03. Klaco House Exterior



KLACO HOUSE



SPECIFIED DETAILS

Arranged over first, second, third and fourth floors – the media style accommodation is finished to the highest of standards throughout, with a new contemporary reception area. Whilst shower and bike facilities are available on the lower ground floor.

The first floor has been fully fitted to provide 1,084 sq ft of space ready for occupation.

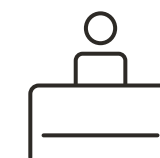
A bespoke fit can be provided on any of the upper floors subject to terms.



01. Reception Detail
02. 1st Floor
03. On-Floor WCs
04. Third Floor



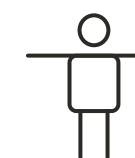
SUMMARY SPECIFICATION



Reception with textural finishes



Secure access control entrance doors



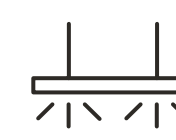
1:10 sq m occupancy ratio



Exposed ceiling and services



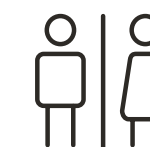
Air conditioning



LED panel lighting



Shower and changing facilities



Male and female WCs on each floor



Bicycle spaces

DEFINED SPACE

For indicative purposes only, not to scale.

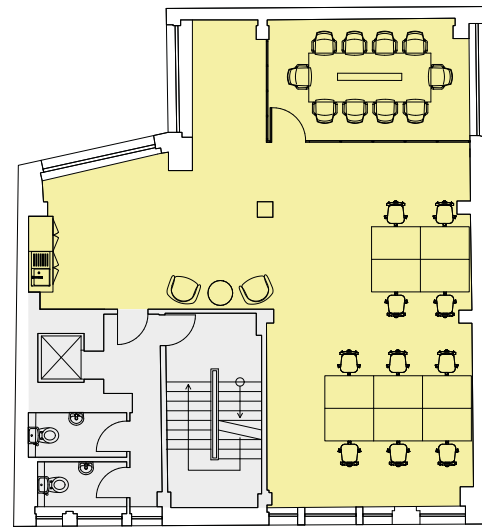


SCHEDULE OF AREAS

Floor	Use	sq m	sq ft
Fifth	Office	LET	LET
Fourth	Office	102	1,099
Third	Office	101	1,090
Second	Office	101	1,088
First	Office	101	1,084
Ground	Office	LET	LET
LG	Office	LET	LET
Total Office		304	4,361

FITTED FIRST FLOOR

Office – 101 sq m / 1,084 sq ft

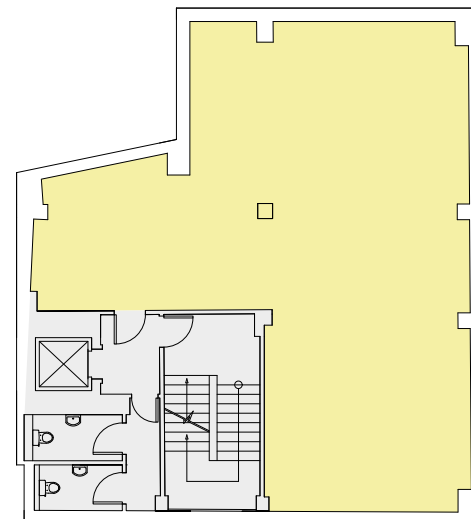


St John's Square

Workstations	10	Kitchenette	01
10 person meeting room	01	Total Fixed Headcount	10
Breakout area	01		

TYPICAL (SECOND/THIRD/FOURTH)

Office – 102 sq m / 1,099 sq ft



St John's Square



First Floor

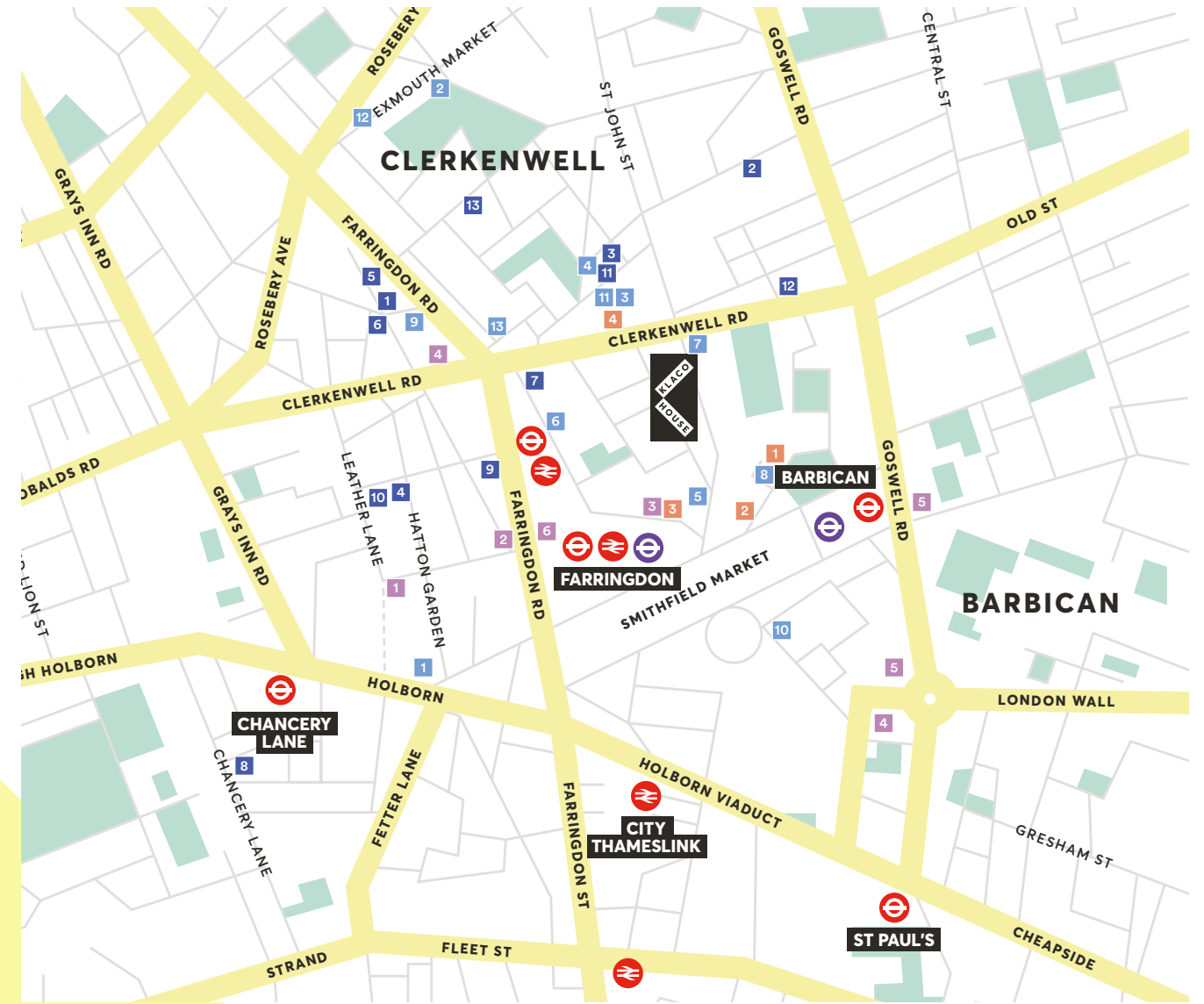


First Floor



Second Floor

AN ENVIED LOCATION



- 01. Iberica
- 02. The Zetter Hotel
- 03. Luca
- 04. BrewDog

Clerkenwell has long been the home to many key names in the creative industries and currently LinkedIn, Vitra, Zaha Hadid, Grey London and Publicis Groupe are among the well known names based in the area.

Businesses continue to choose Clerkenwell and Farringdon as their home due to the eclectic mix of restaurants, bars, hotels, gyms and arts based amenities including galleries and retail spaces.

LOCAL OCCUPIERS

- 01 Adidas
- 02 Airbnb
- 03 Deloitte Digital
- 04 Grey London
- 05 LinkedIn
- 06 Moonpig
- 07 Publicis Groupe
- 08 Saatchi & Saatchi
- 09 Steelcase
- 10 TM Lewin
- 11 Unilever Plc
- 12 Vitra
- 13 Zaha Hadid

BARS & RESTAURANTS

- 01 Bounce
- 02 Coin Laundry
- 03 Compton
- 04 Granger & Co
- 05 Vinoteca
- 06 Iberica
- 07 Luca
- 08 Le Cafe Du Marche
- 09 Piano Works
- 10 Club Gascon
- 11 Sushi Tetsu
- 12 The Exmouth Arms
- 13 The Green

LOCAL HOTELS

- 01 Malmaison
- 02 The Fox & Anchor
- 03 The Rookery
- 04 The Zetter

HEALTH & FITNESS

- 01 Gymbox
- 02 Frame
- 03 F45 Training
- 04 PureGym
- 05 Virgin Active
- 06 MOB45

GRANGER & Co.



FOX & ANCHOR
SMITHFIELD MARKET



attendant

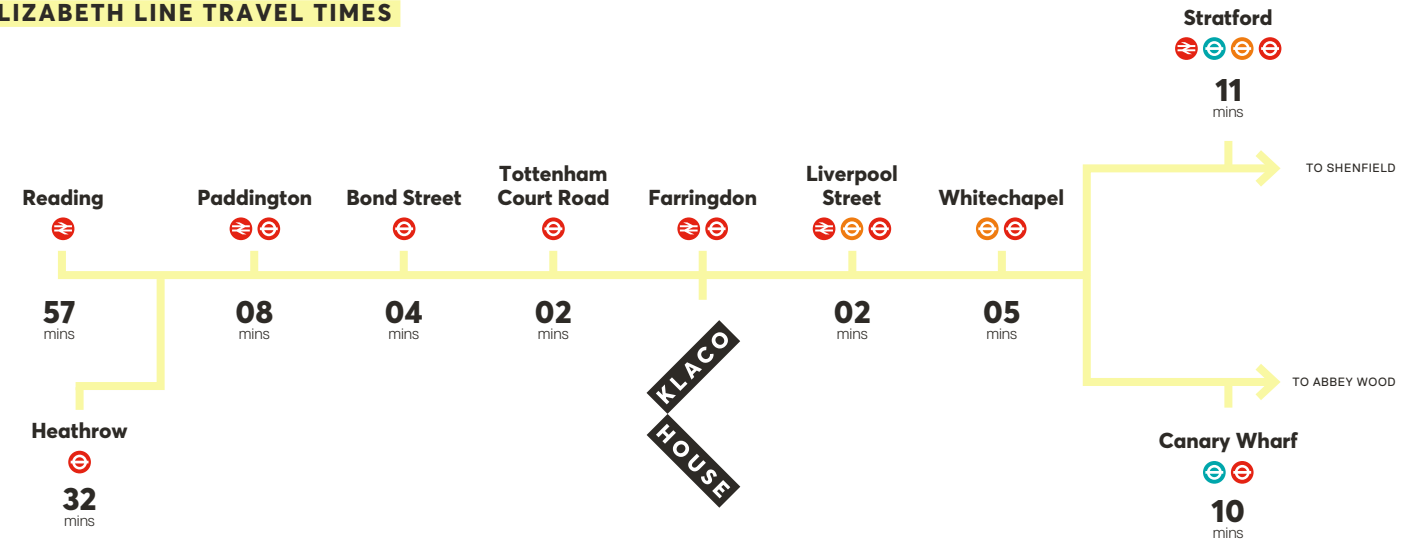


TRAVEL NEAR & FAR

Just a short walk away from Klaco House, Farringdon station offers excellent travel connections in all directions via the London Underground network. For destinations further afield – Thameslink provides connection beyond London to Brighton and both Luton and Gatwick airports.

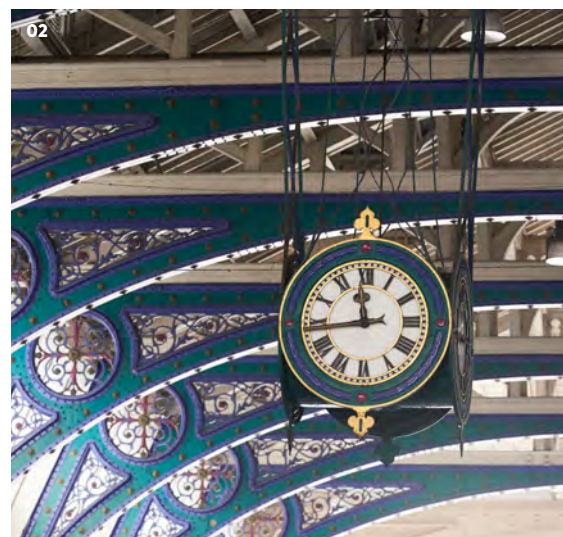


ELIZABETH LINE TRAVEL TIMES



04 FARRINGDON (ELIZABETH LINE)	06 LIVERPOOL ST (ELIZABETH LINE)	08 BOND ST (ELIZABETH LINE)	08 KING'S CROSS ST PANCRAS	11 BLACKFRIARS	09 CITY THAMESLINK
07 BARBICAN	12 PADDINGTON (ELIZABETH LINE)	14 HOLBORN	14 STRATFORD (ELIZABETH LINE)	16 BANK	35 HEATHROW (ELIZABETH LINE)

Journey times taken from the building in minutes. Source: TfL.



- 01. Farringdon Station
- 02. Smithfield Market
- 03. Farringdon Station
- 04. Cowcross Street Ticket Hall CGI
- 05. Long Lane Entrance CGI

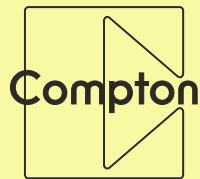
NEW ARRIVAL

The new Elizabeth Line runs from the east to the west of London and beyond – with high frequency, high capacity trains – offering more transport options to occupiers.



CONTACT

For further information,
or to arrange a viewing please contact:



Joshua Milan

jm@metrus.co.uk

07743 853 020

Colin Becker

cb@metrus.co.uk

07714 242 888

Elliot Stern

es@compton.london

07834 918 700

Sonia Oberoi

so@compton.london

07840 840 891

klacohouse.london

Important Notice: Metrus Limited and Compton for themselves and for the vendors or lessors of this property whose agents they are give notice that: (i) these particulars do not form any part of any offer or contract (ii) the statements contained herein are issued without responsibility on part of this firm, its employees or its clients and are statements of opinion and therefore are not to be taken as or implying a statement or representation of fact (iii) any intending purchaser or lessee must satisfy themselves as to the correctness of each of the statements made herein (iv) the vendors or lessors of this property do not make or give, and neither the firm nor any of its employees have any authority to make or give, any representation or warranty whatever in relation to this property (v) all rents and prices quoted are exclusive of VAT unless stated otherwise. Any intending purchasers or lessees must satisfy themselves independently as to the incidence of VAT in any transactions. Terms quoted are subject to contract. July 2022.

Designed & Produced By Cre8te Design – 020 3468 5760 – cre8te.london